



PRO Wear by ID®

**WEAR - WORK
FEEL COMFORTABLE**

Welcome to **ID[®] Identity**

Every day, we provide clothing for companies and events across Europe, emphasizing the joint corporate identity of our customers' customers. We are therefore pleased to present an exciting inspiration PRO Wear by ID[®] catalogue. Rooted in Denmark, but with an international outlook, we want to deliver best-in-industry clothing in terms of quality, functionality, design and responsibility.

We are proud to be able to deliver well-designed and durable products – precisely when and where our customers need them.



Business and **PRODUCT FOCUS**

WE KNOW THE MARKET

In the partnership with us, you get access to all ID® Identity's experience and expertise. We know the market and the common needs of the various industries, which is your guarantee that you can always offer your customers professional advice and the best range of products.

Our large stock at our central warehouse helps us avoid back orders and delayed deliveries. We make high demands on ourselves, and measure our performance down to single customers. Our delivery performance is documented to be 96% (2020).

Hard work demands clothing which is designed for movement and wear. PRO Wear is the answer for employees who are active in their work, and need clothing which simply lasts, day in and day out.

PRO Wear is available in many sizes and versions, and all products are designed for movement, so they are comfortable to wear in any working position. The clothing is also pre-shrunk, so you can always rely on the fit. It can handle daily washing at temperatures up to 80°C for whites, while colours can be washed at 60°C.

Always
TESTED

Good
QUALITY

Long
LIFETIME

Good
SERVICE





More than
YOU SEE

PRO wear QUALITIES

All of our products have undergone strict quality tests, to ensure you get the best possible solution, matching your needs.

01. WASHING

Can withstand being washed at 80°C (white) or 60°C (colours).

02. CERTIFICATION

OEKO-TEX® certified, which is your guarantee that the clothing contains no harmful substances.

EU ECOLABEL certified, which is your guarantee for environmentally friendly production and manufacturing of products.

03. LOGO/CHIP

Option of logo transfer suitable for industrial washing and attachment of chip in-house.

04. SPECIAL PRODUCTION

Option of special production matching particular customer requirements.

05. FEWER REPLACEMENTS

Our pre- and aftercare secure a long lifetime for our products, which means fewer replacements and therefore better economy for our customers.

06. TESTED

Tested according to ISO 15797.

07. SEAMS / BUTTONS / ZIPPER

Strong seams securing long life time. All plastic buttons are stained through, and all press studs are of stainless metal, so both types are well suited for industrial washing. Strong zippers.

08. TREATMENT

Specially developed pre- and aftercare providing lifelong stability and low shrinkage, ensuring a right fit even after many washes.

09. SIZES / COLOURS

Available in many sizes - from 2XS to 6XL and in 21 different colours.

10. MATERIALS

A combination of cotton and polyester, so that the products get the best from both qualities. Cotton provides softness/breathability and makes the clothing comfortable to wear. Polyester provides durability and stability when it comes to fit and colour.

The PRO Wear CARE series contains responsible cotton, that is produced by farmers who are trained to cultivate the soil optimally with the least possible use of chemicals with the optimal use of water. The excellent quality of the cultivated cotton is crucial for future cotton production.

Our products are **SUSTAINABLE**

WE TAKE OUR RESPONSIBILITY SERIOUSLY

Responsible textile production is not about geography. We began production in countries like Bangladesh in the 80's, and have continually developed our collaboration with our partners there. The close dialogue and mutual loyalty has made it possible to implement very high requirements in relation to quality, the environment and working conditions.

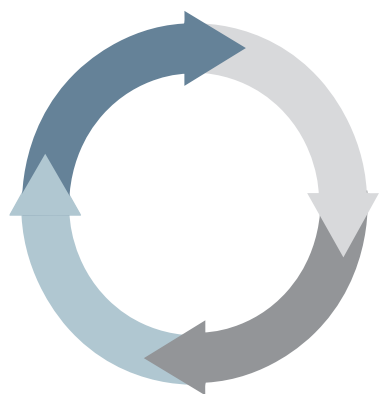
In 2006 we went one step further and established an office in Dhaka, Bangladesh, so we could be present at our producers' on a weekly basis. This gives us a detailed knowledge of the factories' working conditions and quality level, and strengthens relationships with our partners.

QUALITY AND TRUST

Our other suppliers work in line with the same directions as our partners in Bangladesh. They have also received the quality manual and signed our Code of Conduct.

This entails sending us inspection reports, conducting BSCI audits and being visited by Bureau Veritas, among other initiatives. We have a clear and constant focus on CSR and quality. We strive to always be one step ahead of our customers' requirements and expectations – and never deviate from our own principle of doing things properly.



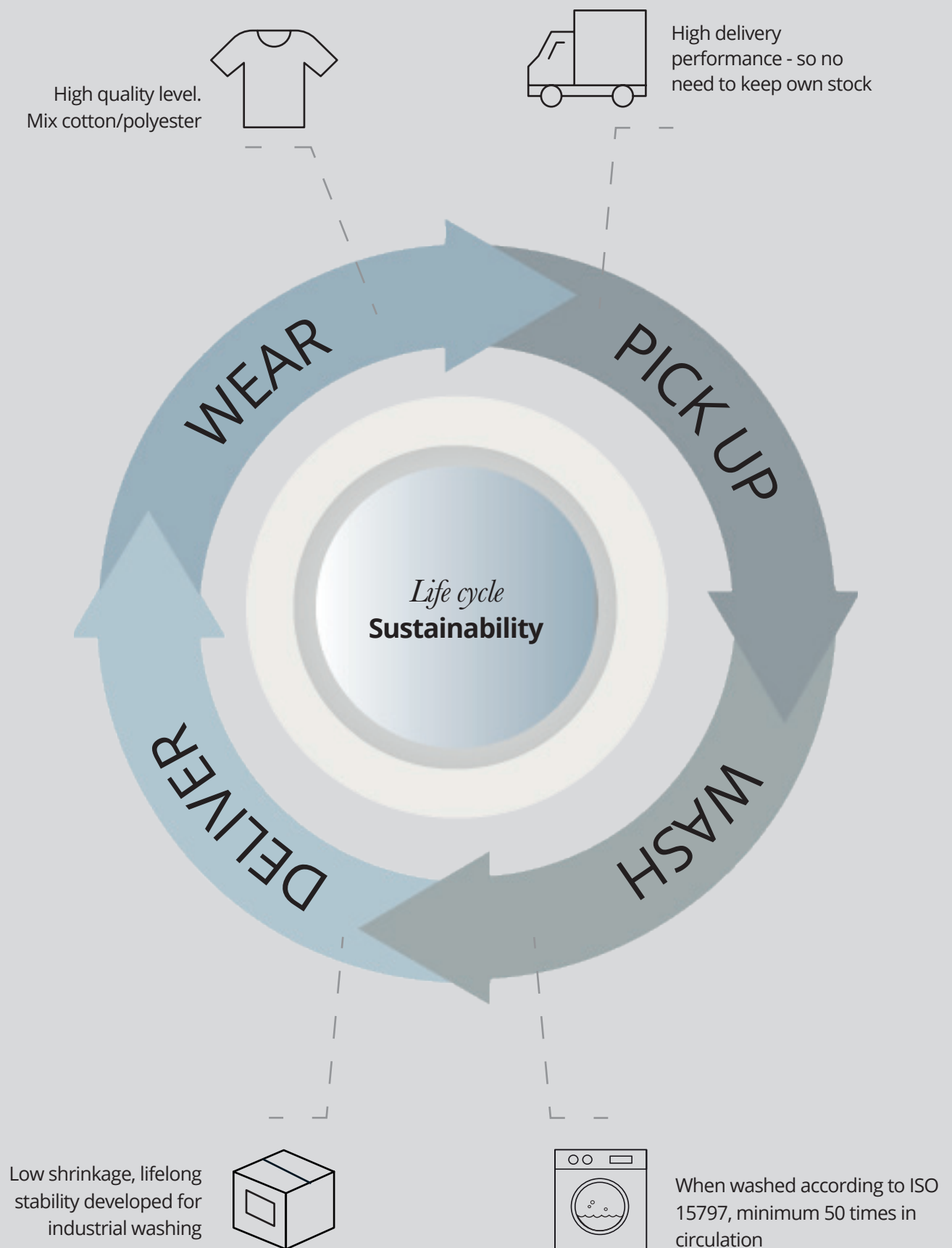


Product **LIFE CYCLE**

LIFE CYCLE EQUALS SUSTAINABILITY

We believe that CSR is about taking responsibility for a company's impacts on people and the environment. This approach has given us a reputation as one of the best in the industry at delivering high quality, well-designed and durable products. And we will continue to do so. In our experience, there are always customers who understand the value of quality – and one of these

is sustainability. A good product which lasts a long time is far more ethical and environmentally friendly than a throw away product. This makes our contribution to sustainability very concrete and effective, as it is integrated into everything we do – every day.







PRO Wear CARE

PRO Wear CARE is our new line of products with a certified EU-Ecolabel. The line has focus on environment, social responsibility and creating a sustainable end product with a long lifespan.



Better for the **ENVIRONMENT**

BETTER FOR YOU

Corporate social responsibility (CSR) is about companies taking responsibility for their impact on people and the environment. Our company was founded more than three decades ago. Back then, CSR was not in the spotlight, but from the outset, we aimed to be a proper – and therefore responsible – supplier, regardless of where in the world we produce our products. This approach has made us known as one of the top players in the industry when it comes to delivering high quality in the form of well-designed

and durable products. And we will continue doing so. Our experience shows that customers understand the value of quality – and one of these values is sustainability. Great products with long durability is far more ethical and environmentally friendly than those you use and throw away. It makes our contribution to sustainability very concrete and effective since this is incorporated into everything we do every day.





BETTER FOR THE ENVIRONMENT BETTER FOR YOU

PRO Wear CARE | We want to make a positive difference to the people we work with. This is why we introduced the PRO Wear CARE textile series, which carries the EU Ecolabel. The EU Ecolabel is your guarantee that the production and manufacturing processes impact the environment as little as possible.



1

RESPONSIBLE COTTON

We have chosen to use responsibly manufactured cotton for our PRO Wear CARE range. The raw cotton is tested for pesticides before it is processed further. The EU Ecolabel requires regular production testing, documentation and traceability in contrast to the use of conventional organic cotton.



2

EDUCATED FARMERS

The cotton is produced by farmers who are trained to cultivate the soil optimally with the least possible use of chemicals with the optimal use of water. The excellent quality of the cultivated cotton is crucial for future cotton production.



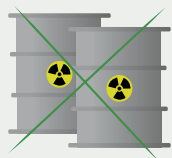
3

RECYCLED POLYESTER

In production, post-consumer plastic is used, which is recycled plastic collected from end-users. Through a unique process, recycled plastic bottles, for example, are transformed into recycled polyester, which helps to reduce carbon emissions in order to protect our environment.

23 %

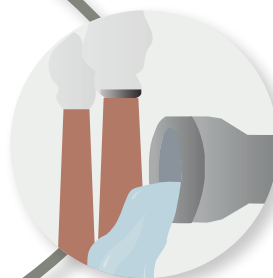
of the PRO Wear
by ID® series is EU
Ecolabel certified



4

NO TOXIC CHEMICALS

Ecolabelling Denmark approves every single dye and chemical used for EU Ecolabelled products. There are requirements for the biodegradability of chemicals, and with a focus on biodiversity, the variety and variability of nature is ensured.



5

MINIMAL POLLUTION

The amount of wastewater discharge and air pollution emission in connection with production processes is measured in production facilities, so the discharge and emission can be checked and documented continuously.



6

SOCIAL RESPONSIBILITY

Social and environmental responsibility is a key aspect of our production processes. We only collaborate with suppliers who are approved and audited in accordance with the EU Ecolabel criteria and comply with ID®'s principles of social, environmental and ethical responsibility.



7

WE PROTECT THE ENVIRONMENT

The EU Ecolabel sets requirements for compliance with basic environmental principles regarding the handling of chemicals, water, waste and energy, and therefore we only cooperate with suppliers approved by Ecolabelling Denmark.



8

SUSTAINABLE END PRODUCT

When choosing EU Ecolabelled products, you are helping to make a difference. These products meet stringent requirements regarding their design, materials and quality to ensure a long product lifetime and a circular life cycle.





Men No. 0370 | Women No. 0371



White



Silver grey



Light blue



Navy



Black

PRO Wear CARE T-shirt

EU Ecolabel certified, casual, durable T-shirt with round neck and sleeve ribbing and extra reinforcement at the neck and shoulder seams. Casual design and attractively fitted without compromising on freedom of movement. The T-shirt is made of responsibly produced cotton and recycled polyester and has undergone a pre-shrinking process at very high temperatures, both before and after dyeing, for extra stability and long life.

Size men: XS - 6XL | Size women: XS - 6XL

60 % cotton / 40 % polyester | 210 - 220 g



PRO Wear[®]





Men No. 0372 | Women No. 0373



White



Silver grey



Light blue



Navy



Black

PRO Wear CARE T-shirt

EU Ecolabel certified, casual T-shirt with perfectly cut V-neck, narrow neck and sleeve ribbing and extra reinforcement at the neck and shoulder seams. Casual design and attractively fitted without compromising on freedom of movement. The T-shirt is made of responsibly produced cotton and recycled polyester and has undergone a pre-shrinking process at very high temperatures, both before and after dyeing, for extra stability and long life.

Size men: XS - 6XL | Size women: XS - 6XL
60 % cotton / 40 % polyester | 210 - 220 g



PRO Wear...









Men No. 0374 | Women No. 0375



White



Silver grey



Light blue



Navy



Black

PRO Wear CARE polo shirt

EU Ecolabel certified, durable polo shirt with smart catalina collar and sleeve ribbing and extra reinforcement at the neck and shoulder seams. Button closure with hidden press studs. Casual design and attractively fitted without compromising on freedom of movement. The polo shirt is made of responsibly produced cotton and recycled polyester and has undergone a pre-shrinking process at very high temperatures, both before and after dyeing, for extra stability and long life.

Size men: XS - 6XL | Size women: XS - 6XL
50 % cotton / 50 % polyester | 210 - 220 g



PRO Wear_®

ISO 15797





PRO Wear^{by ID®}

” Use it often
- Use it well

Hard work demands clothing which is designed for movement and wear. PRO Wear by ID[®] is the answer for employees who are active in their work, and need clothing which simply lasts, day in and day out. PRO Wear by ID[®] is available in many sizes and versions, and all products are designed for movement, so they are comfortable to wear in any working position. The clothing is also pre-shrunk, so you can always rely on the fit.

It can handle daily washing at temperatures up to 80°C for whites, while colours can be washed at 60°C.



Men's PRO Wear T-shirt

Extra durable T-shirt. Four-layer neck ribbing, neck and shoulder bands and half moon at neck. The T-shirt has been pre-shrunk at very high temperatures, both before and after dyeing, for extra stability and long life.

Size XS - 6XL (XS only in white, silver grey, light blue, navy, black, coral, dusty aqua and dusty green)

60 % cotton / 40 % polyester | 210 - 220 g



PRO Wear...

ISO 15797

Men No. 0300



White



Grey melange



Silver grey



Charcoal



Red



Bordeaux



Orange



Yellow



Lime



Bottle green



Purple



Light blue



Blue melange



Azure



Royal blue



Navy



Black



Coral



Dusty aqua



Dusty green

New colours







Ladies' PRO Wear T-shirt

Extra durable T-shirt with round neck and side slit. The T-shirt has been pre-shrunk at very high temperatures, both before and after dyeing, for extra stability and long life. Slightly shaped.

Size XS - 6XL

60 % cotton / 40 % polyester | 210 - 220 g



OEKO-TEX®
STANDARD 100
by Hohenstein

PRO Wear™

ISO 15797

Women No. 0312



White



Grey melange



Red



Lime



Purple



Light blue



Blue melange



Azure



Navy



Black

New colours



Coral



Dusty pink



Dusty aqua



Dusty green



NEW STYLE



Women No. 0317



White



Coral



Dusty pink



Dusty aqua



Dusty green



Light blue



Navy



Black

PRO Wear T-shirt | light

Extra durable T-shirt in a lighter fabric. Four-layer neck ribbing, neck and shoulder bands and half moon at neck. The T-shirt has been pre-shrunk at very high temperatures, both before and after dyeing, for extra stability and long life.

Size XS - 6XL

50 % cotton / 50 % polyester | 175 g



OEKO-TEX®
STANDARD 100
by Hohenstein

PRO Wear_{light}

ISO 15797



Men No. 0310



White



Grey melange



Silver grey



Red



Light blue



Royal blue



Navy



Black

PRO Wear T-shirt | light

Extra durable T-shirt in a lighter fabric. Four-layer neck ribbing, neck and shoulder bands and half moon at neck. The T-shirt has been pre-shrunk at very high temperatures, both before and after dyeing, for extra stability and long life.

Size XS - 6XL

50 % cotton / 50 % polyester | 175 g



OEKO-TEX®
STANDARD 100
by Hohenstein

PRO Wear_{light}

ISO 15797

New colours



Coral



Dusty aqua



Dusty green



Women No. 0315



White



Light blue



Navy

Ladies' PRO Wear T-shirt | 1/2-sleeved

Highly durable T-shirt with round neck and side slit. Sleeves end at the elbow. The T-shirt has undergone a pre-shrinking process at very high temperatures, before and after dyeing, for extra stability and long life. Slightly fitted.

Size XS - 6XL

60 % cotton / 40 % polyester | 210 - 220 g



OEKO-TEX®
STANDARD 100
by OEKO-TEX®

PRO Wear,®

ISO 15797





Men No. 0311



White



Grey melange



Silver grey



Red



Royal blue



Navy



Black

Men's PRO Wear T-shirt | long-sleeved

Extra durable T-shirt with long sleeves, four-layer neck ribbing, neck and shoulder bands and half moon at neck. The T-shirt has been pre-shrunk at very high temperatures, both before and after dyeing, for extra stability and long life. Ribbing at sleeve edges.

Size XS - 6XL (XS only in white and navy)
60 % cotton / 40 % polyester | 210 - 220 g



PRO Wear[®]

ISO 15797



Women No. 0313



White



Red



Light blue



Navy



Black

Ladies' PRO Wear T-shirt | 3/4-sleeved

Extra durable T-shirt with 3/4-length sleeves, round neck and side slit. The T-shirt has been pre-shrunk at very high temperatures, both before and after dyeing, for extra stability and long life. Slightly shaped.

Size S - 6XL
60 % cotton / 40 % polyester | 210 - 220 g

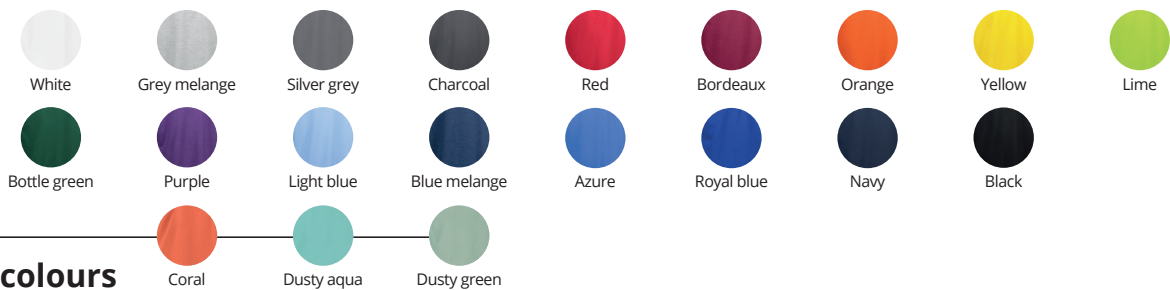


PRO Wear[®]

ISO 15797



Men No. 0320 | Women No. 0321



PRO Wear polo shirt

Extra durable and classic polo shirt (Men No. 0320 with chest pocket). Neck and shoulder bands. Half moon at neck. The polo shirt has been pre-shrunk at very high temperatures, both before and after dyeing, for extra stability and long life.

Size men: 2XS - 6XL (2XS only in white) | Size women: XS - 4XL
50 % cotton / 50 % polyester | 210 - 220 g



OEKO-TEX®
STANDARD 100
100% COTTON

PRO Wear

ISO 15797

PRO Wear polo shirt | without pocket

Extra durable and classic polo shirt without chest pocket. Neck and shoulder bands. Halfmoon at neck. The polo shirt has been pre-shrunk at very high temperatures, both before and after dyeing, for extra stability and long life.

Size XS - 6XL
50 % cotton / 50 % polyester | 210 - 220 g



OEKO-TEX®
STANDARD 100
100% COTTON

PRO Wear

ISO 15797



Men No. 0324









Men No. 0328 | Women No. 0329



White



Bordeaux



Light blue



Azure



Navy

PRO Wear polo shirt | pipings

Durable polo shirt with contrast piping at shoulders and sides. Neck and shoulder band and halfmoon at neck. The polo shirt has been pre-shrunk at very high temperatures, both before and after dyeing, for extra stability and a long life.

Size men: XS - 6XL | Size women: XS - 6XL
50 % cotton / 50 % polyester | 210 - 220 g



OEKO-TEX®
STANDARD 100
by Hohenstein

PRO Wear

ISO 15797



Men No. 0330



White



Grey melange



Silver grey



Red



Light blue



Royal blue



Navy



Black

PRO Wear polo shirt | press stud

Extra durable polo shirt with press studs on the placket. Neck and shoulder bands and halfmoon at neck. The polo shirt has been pre-shrunk at very high temperatures, both before and after dyeing, for extra stability and long life.

Size XS - 6XL
50 % cotton / 50 % polyester | 210 - 220 g



OEKO-TEX®
STANDARD 100
by Hohenstein



PRO Wear

ISO 15797



PRO Wear polo shirt | press stud

Extra durable long-sleeved polo shirt with press studs on the placket. Neck and shoulder bands and halfmoon at the neck. The polo shirt has been pre-shrunk at very high temperatures, both before and after dyeing, for extra stability and long life.

Size XS - 6XL

50 % cotton / 50 % polyester | 210 - 220 g



PRO Wear..



Men No. 0336



White



Silver grey



Red



Navy



PRO Wear polo shirt | pocket

Extra durable polo shirt with long sleeves. Chest pocket, neck and shoulder band and halfmoon at neck. The polo shirt has been pre-shrunk at very high temperatures, both before and after dyeing, for extra stability and long life.

Size XS - 6XL (5XL + 6XL only in white and black)

50 % cotton / 50 % polyester | 210 - 220 g



PRO Wear..

ISO 15797

Men No. 0326



White



Grey melange



Navy



Black



Men No. 0366 | Women No. 0367

PRO Wear cardigan

Cardigan in extra durable quality. Ribbing in catalina collar as well as in sleeves and bottom. Half-moon at neck and neck strap. Extra Twill reinforcement at shoulders. Good-quality YKK zipper on front and on side pockets. Soft, brushed inner fabric. The fabric has been pre-shrunk at very high temperatures, both before and after dyeing, for extra stability and long life. Slightly shaped.

Size men: XS - 6XL | Size women: XS - 6XL
60 % cotton / 40 % polyester | 290 g



OEKO-TEX®
STANDARD 100
by Hohenstein

PRO Wear_{car}

YKK MAIN ZIPPER

ISO 15797



White



Silver grey



Red



Light blue



Navy



Black



Men No. 0360

PRO Wear classic sweatshirt

Extra durable sweatshirt. Classic model with round neck. Double stitching and ribbing on collar, sleeves and at the bottom. Soft, brushed inner fabric. The shirt has been pre-shrunk at very high temperatures, both before and after dyeing, for extra stability and long life.

Size XS - 6XL
60 % cotton / 40 % polyester | 290 g



OEKO-TEX®
STANDARD 100
by Hohenstein

PRO Wear_{car}

ISO 15797



White



Silver grey



Charcoal



Red



Royal blue



Navy



Black



PRO Wear T-shirt | contrast

Extra durable two-coloured T-shirt. Four-layer neck ribbing, neck and shoulder bands and halfmoon at neck. The T-shirt has been pre-shrunk at very high temperatures, both before and after dyeing, for extra stability and long life.

Size XS - 6XL

60 % cotton / 40 % polyester | 210 - 220 g



OEKO-TEX®
STANDARD 100
100% COTTON
100% POLYESTER
100% COTTON / 40% POLYESTER

PRO Wear_®

ISO 15797

Men No. 0302



White



Silver grey



Red



Bottle green



Navy



Black



PRO Wear polo shirt | contrast

Extra durable two-coloured polo shirt. Neck and shoulder bands and halfmoon at neck. The polo shirt has been pre-shrunk at very high temperatures, both before and after dyeing, for extra stability and long life.

Size XS - 6XL

50 % cotton / 50 % polyester | 210 - 220 g



OEKO-TEX®
STANDARD 100
100% COTTON
100% POLYESTER
50% COTTON / 50% POLYESTER

PRO Wear_®

ISO 15797

Men No. 0322



White



Silver grey



Red



Bottle green



Navy



Black



PRO Wear sweatshirt | contrast

Extra durable two-coloured sweatshirt with round neck. Double stitching and ribbing on collar, sleeves and at the bottom. Soft, brushed inner fabric. The sweatshirt has been pre-shrunk at very high temperatures, both before and after dyeing, for extra stability and long life.

Size XS - 6XL

60 % cotton / 40 % polyester | 290 g



OEKO-TEX®
STANDARD 100
CERTIFIED
by independent
institutions

PRO Wear_{sw}

ISO 15797

Men No. 0362



White



Silver grey



Red



Bottle green



Navy



Black



What do the symbols mean?



The EU Ecolabel is your guarantee that clothing bearing the EU Ecolabel impacts the environment as little as possible. The EU Ecolabel ensures that the clothing does not contain pesticide residues and other environmentally harmful chemicals, that eco-friendly dyes have been used and that waste water is handled responsibly.



Loose fitting model



Regular model



Tight fitting model

ISO 15797

ISO 15797 is an international standard for evaluating a product's suitability for industrial washing. The tests are carried out in close cooperation with external experts.

YKK MAIN ZIPPER

Quality zipper from YKK



The product has been developed to meet the hygiene requirements for food production as defined in HACCP - certified by Hohenstein.

PRO Wear^{by ID®}

PRO Wear by ID® has been developed for professional use. It can withstand daily washing at high temperatures. The series fulfill requirements of strength, colour-fastness and fit.

STANDARD 100 by OEKO-TEX® is your guarantee that the clothing does not contain harmful substances.



STANDARD 100 by OEKO-TEX®, Annex 4, product class 2, is subject to requirements covering pH value and the content of, for example, pesticides and heavy metals.



STANDARD 100 by OEKO-TEX®, Annex 6, product class 1, places even stricter requirements on the content of substances in the clothing which are hazardous to human health and the environment.

Industrial washing of PRO Wear by ID®

The ID® PRO wear line is developed and tested for industrial washing. Below we have passed on some useful advice based on many years of experience which may contribute to optimal use and durability.

Our experience tells us, that there are differences in routines and methods in industrial washing. The differences that may be experienced could be in e.g. shrinkage and colour.

The following instructions are only a guide and serves as a supplement to our clients' own experiences.

General comments

Always check the recommendation on the care label of the garment. The products are tested according to ISO 15797, but we also recommend own wash/drying test before use.

All garments should be washed at least once before taken into use. This is important due to chemical residues and excess dye from production of fabrics and to inevitable shrinkage (also for "pre-shrunk" products). Also to minimize possible surplus fibers from sweat products which are brushed inside, which disappear after few washes.

Consider shrink variations up to app. +/- 5-7% for sweat products and others up to app. +/- 5% and fabrication tolerances up to +/- 1,5 cm.

Industrial washing

Do not apply bleaching and chemicals with optical brighteners on coloured products. Effective chemicals incl. chlorine, disinfectants and optical brighteners can reduce life time and influence quality/appearance of fabrics and accessories.

The indicated type and dosage from the supplier of chemicals must be followed closely. Textiles should always be sorted/washed according to type and colour.

Wash the garments with the inside out and close zippers and velcro.

Avoid "over drying". Choose the correct drying temperature according to the fibre type of the garment. Remember that polyester dries faster than cotton, e.g. fleece products.

Steamer (tunnel) drying may influence fit/shape and shrinkage pattern. Carry out own test to clarify possible effects from the drying method. Steam must be added to avoid "over drying".

How to extend the durability of logos

It is important to choose logo quality and type (print/transfer, embroidery) considering the use and washing/drying method of the garment.

The wash instruction in the care label on the clothes also applies for the logo.

Harsh chemicals such as bleach etc. can affect the logo in wash.

Other ID® products in industrial washing

Other ID® products besides ProWear are used in industrial washing. However, it is very important to follow the instructions on the care label for such products. Especially for chemicals, temperatures and drying methods there are certain limitations which must be observed.

ID® cannot assume any responsibility for complaints arising from inappropriate use and/or washing of our products.

By any complaints, please provide 3-5 samples + information about the production number from the carelabel inside, extent/volume and a copy of the washing process and chemical prescription.

PRO Wear^{by ID®}

BECOME A PART OF THE COMMUNITY



www.facebook.com/www.id.dk/



www.instagram.com/identity_official/



www.linkedin.com/company/3308367/

www.id.dk/en/pro-wear-by-id

We reserve the right to make modifications without notice and accept no liability for any printing errors.